

Weekly Newsletter

7TH NOVEMBER 2025



Dear Parents and Carers,

I hope you all had a wonderful October half-term with your children – one filled with fun, and perhaps a few spooky surprises, as some of you celebrated Halloween, followed by Bonfire Night this week! The half-term weather was surprisingly kind, and the autumnal colours of the leaves set against the backdrop of bright blue skies were beautiful.

As we return to school, I want to extend a heartfelt welcome back to each and every one of you. The autumn term is always a special time in school as we make our way towards the festive period.

We have so much to look forward to in the coming weeks as we begin our journey toward Christmas. From festive crafts to winter performances, Christmas jumper days and fun events, there will be plenty of opportunities for our children to shine, share, and celebrate. The staff of Whipman Woods have been busy planning enriching learning opportunities, and the Nativity songs, lines, and actions are in full swing.

This week, the whole school has been focusing on the run-up to Remembrance Day, engaging in crafts and activities that remind us of the importance of remembering those who gave their lives to save others. Thank you to all our families who have been working with their children to create Remembrance crafts at home too – even extending to crocheted poppy headbands for our staff team to wear! We have been blown away by the imaginative and skilful contributions that you have made. Look out for these as we make a display for you all to enjoy.

We still have a few knitted poppies for sale in the school office if you would like to purchase one for £2. These have been very popular, and all monies donated will be given to the Royal British Legion.

We are all incredibly proud of how our children are continuing to grow – not just academically, but as kind, thoughtful, and resilient young people, already making their mark on the world. As we move through this term, we know that they will continue to amaze us with their achievements and hard work.

Thank you, as always, for your continued support. Together, we make Whipman Woods a place where every child feels valued, inspired, and excited to learn.

A handwritten signature in black ink that reads 'Nicola Green'.

Nicola Green
Headteacher



Bassetlaw Food Bank

Before half term, we all came together, children staff and parents to celebrate our annual Harvest Festival. As part of the celebration, children and families generously donated a wonderful collection of food items to support those in need within our community. A group of pupils helped to gather, sort, and pack the donations, ready to be delivered to the Bassetlaw Foodbank.

Thanks to everyone's contributions, we were able to send a fantastic selection of food that will make a real difference to local families this autumn.

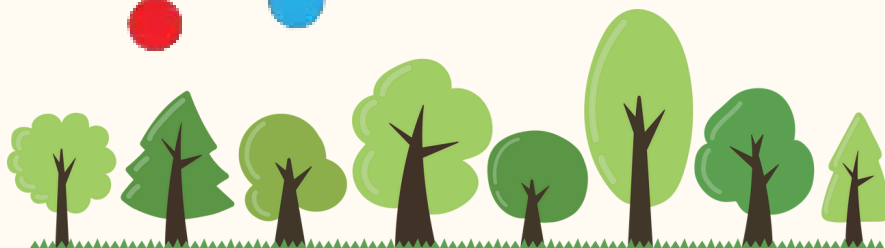
We would like to thank all our children, parents, and staff who supported this year's collection - your generosity truly reflected the spirit of giving.



Children in Need

On **Wednesday 12th November**, Whipman Woods would like to join the nation in celebrating the annual 'Children in Need' Fundraiser. We are asking our children to dress in spotty clothes or yellow clothes on the day with a contribution of £1 cash being brought into school so that we can make a donation to charity on behalf of Whipman Woods Flying High Academy.

We will also be having a visit from Pudsey Bear organised by Asda Sandy Lane during the school day as an extra special surprise! Shhhh do not tell the children!



Dates for your Diary

Tuesday 11th November - Little Swings Golf Session (Elm Class only)

Wednesday 12th November - Pudsey Bear Visiting Whipman Woods with Asda Sandy Lane (during school time)

Wednesday 12th November - Children in Need (Non-uniform day £1 donation)

Thursday 13th November - EYFS Books/Biscuits Event 2.40pm

Monday 17th November - Y1-Y6 Books/Biscuits Event 2.30pm

Wednesday 19th November - Maple School Visit Sheffield Manor Lodge

Tuesday 2nd December - Cedar and Beech Visit - South Yorkshire Air Museum

Monday 8th December - Christmas Craft Day (during school day)

Wednesday 10th December - EYFS Nativity Performance 9.30am

Wednesday 10th December - KS1 Nativity Performance 2.30pm

Thursday 11th December - KS1 Nativity Performance 9.30am

Thursday 11th December - EYFS Nativity Performance 2.30pm

Thursday 11th December - Oak School Trip Jorvik Centre

Monday 15th December - Christmas Fair 2.30pm-4.30pm

Tuesday 16th December - KS2 Carol Concert 2pm-3pm

Thursday 18th December - Christmas Dinner and Christmas Jumper Day

Friday 19th December - Last day of Autumn Term in school

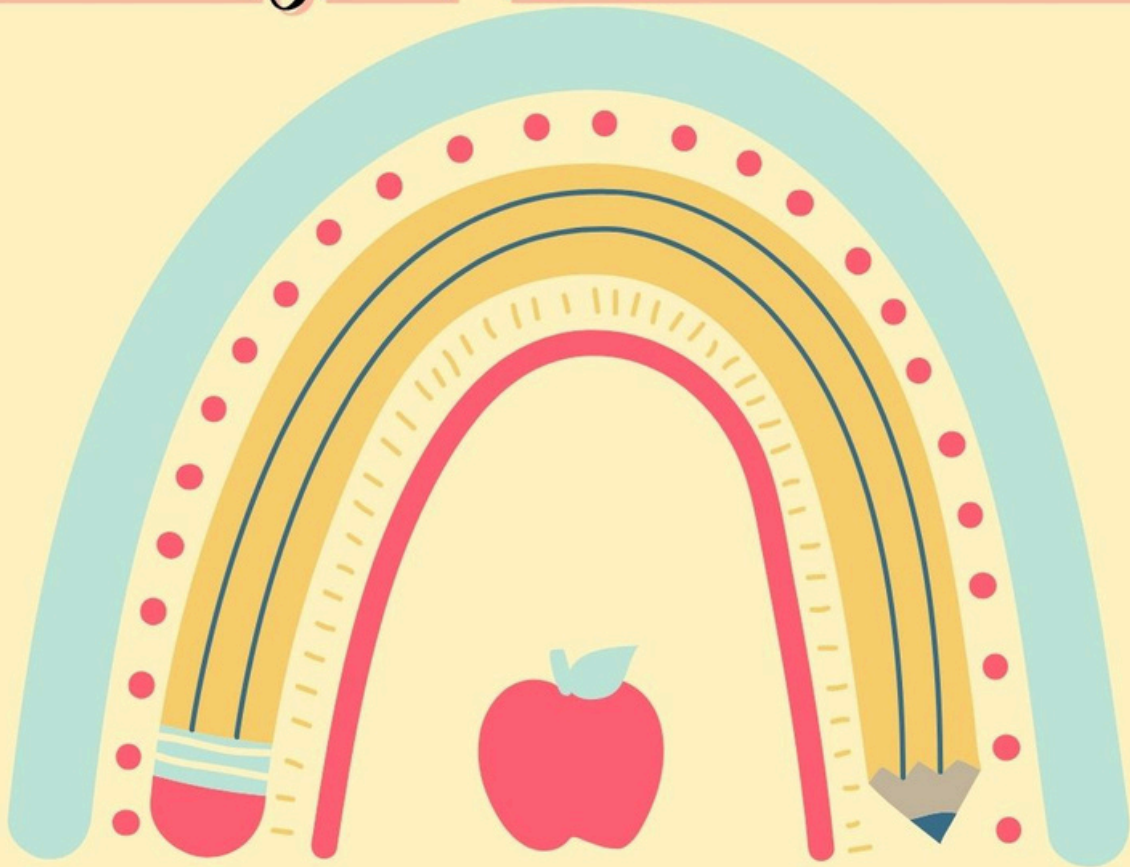
Attendance

Let's celebrate our amazing attendance for the first week back to school - Congratulations to Maple class for having the highest attendance this week. Who do we think will match or beat Maples attendance for next week?

Willow	Cedar	Beech	Maple	Oak	Whole School
98.76%	98.57%	98.67%	99.17%	93.33%	98.27%



Nursery & Reception Books and Biscuits Thursday 13th November 2025



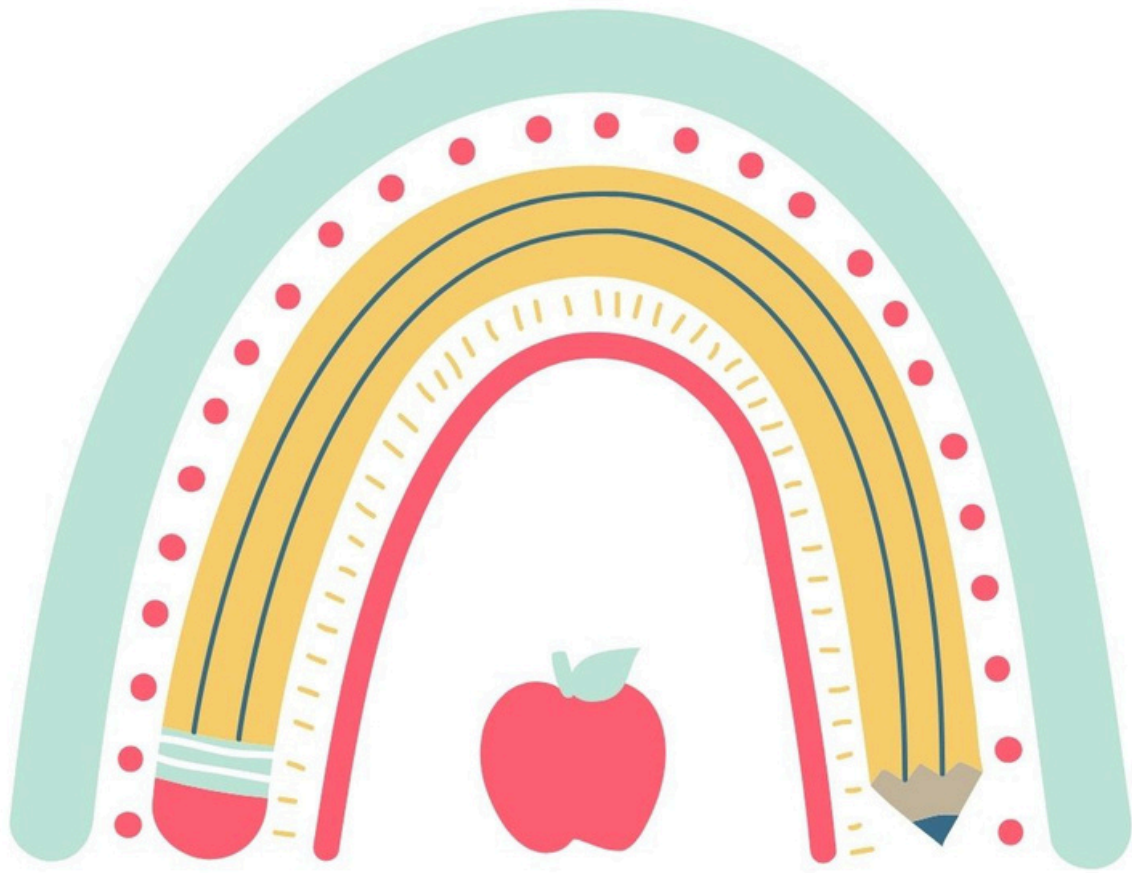
JOIN US ON THURSDAY AFTERNOON AT 2:40PM FOR
'BOOKS AND BISCUITS' (FOR ELM AND WILLOW
CLASSES).

SHARE A STORY WITH YOUR CHILD AND ENJOY A
CUP OF TEA!



Books and Biscuits

Monday 17th November 2025



JOIN US ON MONDAY AFTERNOON AT 2.30PM FOR
'BOOKS AND BISCUITS' (FOR YEAR 1 - 6).
SHARE A STORY WITH YOUR CHILD AND ENJOY A
CUP OF TEA!



Starting Primary school in September 2026 - apply now

Last year:

99% 

of applicants were allocated one of their four preferences

Where no preference could be met

79% had listed only ONE school 

Considering listing only ONE school?

Robin lives in the catchment area of a popular primary school.



Parent applies on time listing one preference for an out of catchment school



On National Offer Day, the preferred school is oversubscribed (*more applications than places available*) and a place cannot be offered for Robin



A place cannot be offered at the catchment school as it is also oversubscribed with preferences



Robin is offered a place at a school over six miles away - the next closest with places available



Apply online at:

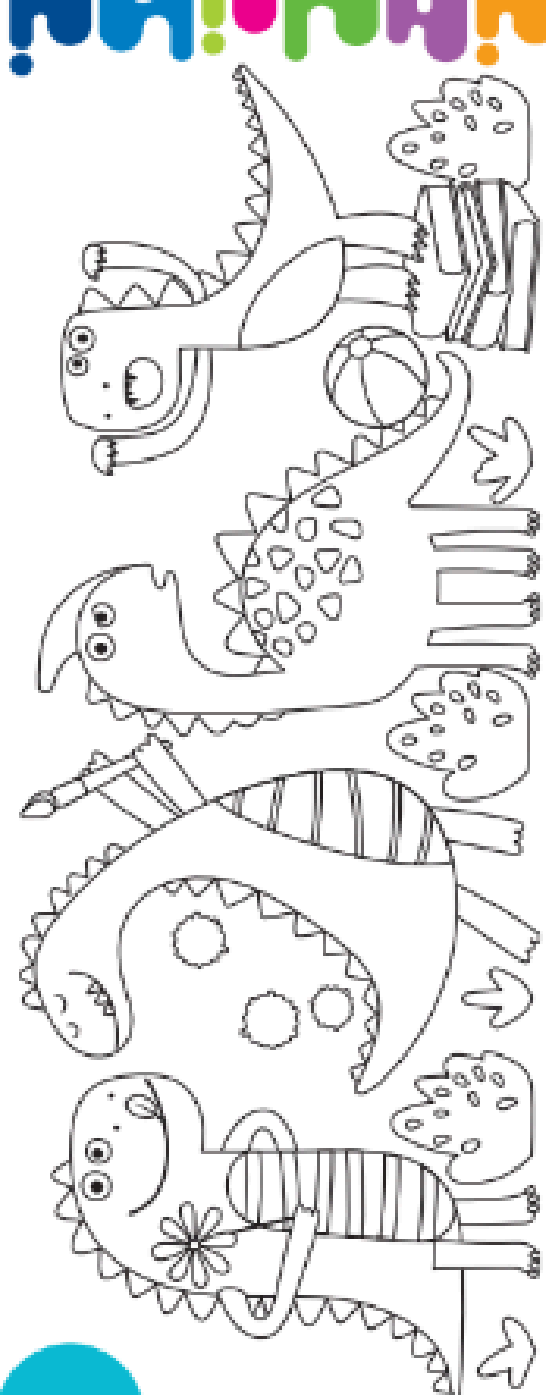
nottinghamshire.gov.uk/admissions

- Apply on time
- Use all four preferences
- Check the admission criteria

Apply online **BEFORE**
Thursday 15 January 2026



Nottinghamshire
County Council



This
bookmark
belongs to

DO P 8705