

Weekly Newsletter

21ST NOVEMBER 2025



Dear Parents and Carers,

We are always so grateful for your support, but after experiencing the Key Stage 1 and 2 'Books and Biscuits' event on Monday, and this week's Tuesday morning reading session for Cedar class, we have to say an extra-special thank you. Your attendance at both events truly blew us away.

Reading is unquestionably the key that unlocks all learning for children, and it's clear that you recognise this in the enthusiasm and commitment you show in nurturing a love of reading at home (and when you join us in school). We have had so many of you joining us that we had to move from the classroom into the hall – what a wonderful reason for a change of venue! Thank you, sincerely, for your continued support. You make such a difference.

This week has also seen Maple class enjoy an action-packed day at Sheffield's Manor Lodge where they spent (so they tell me) 'the best day ever!' engaging in activities that deepened and enhanced the learning that is taking place in school. It was wonderful to see (despite the coldness of the day) their happy faces as they returned at the end of the day.

Again, a huge thank you to you for enabling this to happen – we know that our trips and visits are an additional cost, but we do choose them with the interests and learning of the children in mind. And, when you ask a child what their favourite part about their primary school life was before they leave at the end of Year 6, they always say, "The trips!".

We have also been touched by the wonderful manners and thought shown by so many of our children. They show genuine care and concern for others, which is so important. Going out into the world beyond Whipman Woods with such wonderful values, manners, and concern for others, will ensure they always stand out for all the right reasons. All our visitors to Whipman comment on the warmth, love, and care that can be felt, not just from the staff towards the children, but from the children to other children and to the adults in school. Whipman Woods really is a very special place!


A special thank you to the wonderful parents who dropped off some beautiful decorations for our Whipman Woods' Christmas tree – we are incredibly grateful and such acts of kindness mean the world.

Have a wonderful weekend,

A handwritten signature in black ink that reads 'Nicola Green'.

Mrs Nicola Green
Head Teacher





Goodbye and Good Luck Mrs Lovett

As we shared earlier in the week, Mrs Lovett leaves us today to begin her maternity leave. It seems no time at all since she shared her news – the weeks have whizzed by! We wish her all the luck in the world and every happiness at this very special time for her and her family.

Mrs Goddard, an experienced Early Years teacher, will be the class teacher in Willow class between now and the beginning of the Spring Term when Mrs Keogh will teach the class on a permanent basis. We know you will make Mrs Goddard feel very welcome. All information relating to the children will of course be shared with her as part of the handover but please just let us know if you have any questions or queries.


Maple Class School Trip

Maple Class had a fantastic time on their Stone Age experience day at Manor Lodge! The children threw themselves wholeheartedly into every activity, showing curiosity, teamwork and enthusiasm from start to finish. They hunted for their own 'dinner' using homemade spears and bows and arrows, created atmospheric cave paintings by candlelight, and worked brilliantly together to build sturdy Stone Age-style shelters. Their questions during our timeline activity showed real interest in understanding just how long ago the Stone Age truly was, and they handled a fascinating range of artefacts with care, respect and excitement. It was a wonderful day of hands-on learning, and the children were not only fully engaged but were also outstanding ambassadors for Whipman Woods throughout the visit.



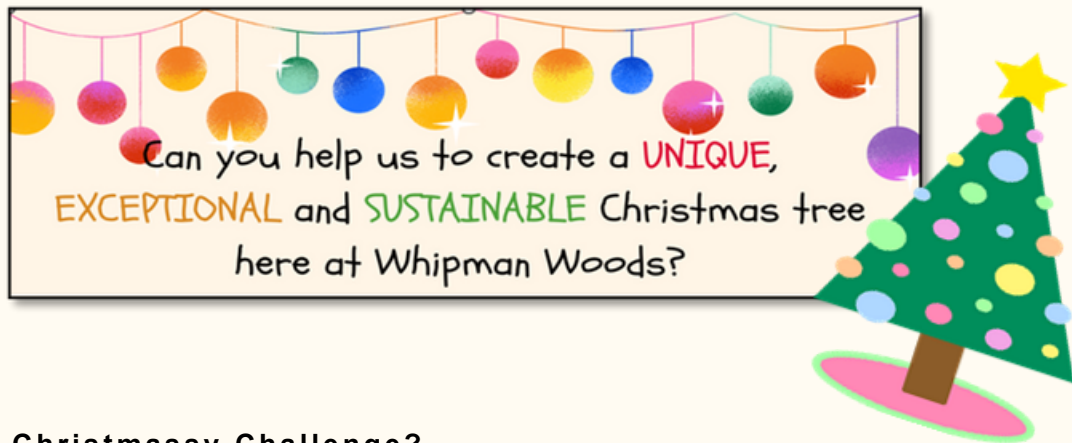
Books and Biscuits

On Monday afternoon, families of our Year 1–6 children joined us for our “Books and Biscuits” event. It was wonderful to see the joy of reading shared between adults and children. Our older pupils also took the opportunity to read to the younger ones, creating a lovely sense of community and a shared love of books.

A special thank you to  ASDA Sandy Lane for donating the biscuits tea and coffee for our Book and Biscuits event.



Whipman Woods Christmas Bauble Challenge



Are You Up for a Christmassy Challenge?

We would love your help in decorating our school Christmas tree this year! In keeping with our partnership characteristics - **Unique**, **Exceptional**, and **Sustainable** – we are inviting all our children to contribute a bauble that can be treasured for years to come, creating a legacy for them.

Whilst out shopping, your challenge is to choose a bauble that truly represents your child (or your family as a whole). This special decoration will be proudly displayed on our school Christmas tree when it goes up in the hall on the **1st of December**.

Your kind and thoughtful contributions will help our Whipman Christmas tree shine year after year. We hope you will agree that this is a wonderful opportunity for your child to make a meaningful mark and to see how their individual contribution becomes part of something truly special.

Please remember to add your child’s name to the bauble before bringing it into school!



Friends Of Whipman Woods' Christmas Fair

You may already have seen our flyer advertising our Whipman Woods' Christmas Fair on **Monday 15th December**. We are looking for stallholders and food vendors to provide some of the fun, and stalls are charged at £10 each. We are also looking for contributions of raffle/tombola prizes. If you are out and about and want to mention us to any local businesses who may be able to support with vouchers or prizes, we would really appreciate your support with this.

We look forward to you, your family, and the wider community joining us for this festive event. Stallholders should arrive at 2.30pm for set-up, the doors will open for browsing at 3pm, and the children will be dismissed at the usual time of 3.15pm, when staff will open the children's stalls and games, which will be set up in The Grove.

We would really appreciate your support at this event – all funds raised will go towards the purchase of a set of staging blocks for our school hall, which will further enhance the quality of nativity plays, family assemblies, and school productions moving forward.



Stars of the Week

Today, parents and family members gathered in the hall to celebrate our wonderful children who have been chosen by their class teachers for demonstrating their ability to act

Resilience!

Our definition of RESILIENCE is as follows:

"Keeping going and trying again, even when something feels hard, and understanding that making mistakes helps us to learn and grow"

Congratulations to our winners, Eva, Elif, Ishan, Saiya and Freddie.

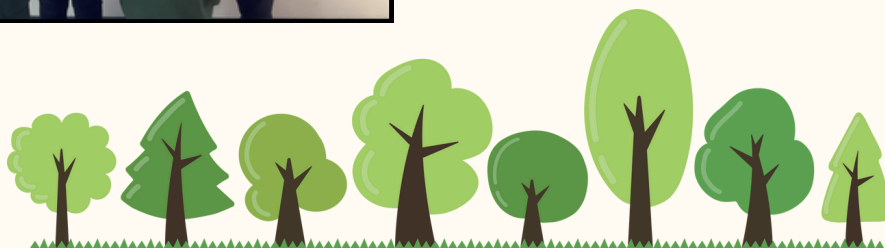


Reader of the Week

Let's celebrate our amazing readers who have shown dedication to the reading cause in a range of ways.

Their positive example to others means that a tangible love of reading within Whipman Woods is contagious and inspires others too!

Congratulations to our winners, Jacob, Summer, Ronnie, Seraphina and Carter.



Bronze Award Winners

After celebrating our first Bronze Award winners last week, we've had an influx of new achievers this week!

Congratulations to all who received their certificates today.

These children earned their Bronze Award by collecting 50 positive behaviour points. Well done to everyone for their hard work and fantastic behaviour!



Colder Weather Clothing - and zips!

As the weather turns colder, we kindly remind parents to ensure that children come to school with appropriate warm clothing, including coats, gloves, scarves and hats, with all items clearly named. We also encourage you to support your child in practising how to zip up their own coat so they can stay warm and comfortable throughout the school day. Thank you for helping us keep everyone cosy at Whipman this winter!



Attendance

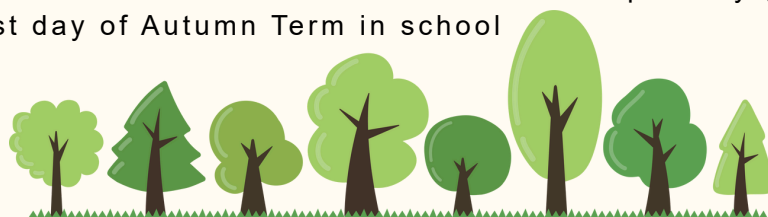
We encourage all pupils to aim for their best attendance each week. However if your child is absent, please remember, you must inform the school office by phone or email as soon as possible.

Willow	Cedar	Beech	Maple	Oak	Whole School
99.28%	93.57%	97.53%	98.33%	100%	97.66%



Dates for your Diary

- Monday 24th November** - Family Star Gazing Evening 6pm-7.30pm (Tickets available from school office)
- Tuesday 2nd December** - Cedar and Beech Visit - South Yorkshire Air Museum
- Monday 8th December** - Christmas Craft Day (during school day. For information only)
- Monday 8th December** - SEND Coffee and Chat Meeting 1.45pm - 3.10pm
- Wednesday 10th December** - EYFS Nativity Performance 9.30am
- Wednesday 10th December** - KS1 Nativity Performance 2.15pm
- Thursday 11th December** - KS1 Nativity Performance 9.30am
- Thursday 11th December** - EYFS Nativity Performance 2.30pm
- Thursday 11th December** - Oak School Trip Jorvik Centre
- Monday 15th December** - Christmas Fair 2.30pm-4.30pm
- Tuesday 16th December** - KS2 Carol Concert 2pm-3pm
- Wednesday 17th December** - Christmas Dinner and Christmas Jumper Day (menu sent out)
- Friday 19th December** - Last day of Autumn Term in school





WHIPMAN WOODS FHA
PROUDLY PRESENTS IN COLLABORATION
WITH BASSETLAW ASTRONOMICAL
SOCIETY

A FAMILY EVENING OF STAR GAZING

Telescopes Talks Star Maps



Monday 24th November 2025

6.00pm - 7.30pm


**£3 PER
FAMILY
TICKET**

Tickets on sale from the
school office

Hot Chocolate & Cake on
sale - all proceeds to
School Fund

Whipman Woods FHA, Gatekeeper Way, Worksop S81 7FT





Can you help us to create a **UNIQUE**,
EXCEPTIONAL and **SUSTAINABLE** Christmas tree
here at Whipman Woods?

With your help, we hope to collect a lasting set of baubles for our Whipman Woods Christmas tree - each one representing one of our children. It will be a bauble they can look out for year after year as a reminder that they have contributed to something **AMAZING** - just as they do every day at school!



Choose a bauble, bright and true,
One that shows what's you, just you!
Hang it on our Christmas tree,
A sparkling part of our school family.

Bring your bauble in to school,
By December 1st, would be really cool!
Then year on year, you'll proudly see
Your special place upon the tree



UNIQUE

because it is chosen to represent you in some way

EXCEPTIONAL

because it will make our tree look beautiful

SUSTAINABLE

because it will hang on our tree year after year



Whipman Woods' Christmas Fair!



Book stall



Games

Children's stalls



**Monday 15th December 2025
at 3:00pm!**



Brass Band



Raffle



**Face
painting**



Hot chocolate

and more!

Cash only!





CHRISTMAS FAIR!

WE ARE LOOKING FOR STALL HOLDERS
FOR OUR CHRISTMAS FAIR!

DO YOU MAKE AND SELL CRAFTS, SELL FOOD OR DRINKS OR
OFFER SOMETHING ELSE? WE'D LOVE TO HEAR FROM YOU!
DONATIONS OF PRIZES ALSO APPRECIATED.

MONDAY 15TH DECEMBER 2025
AT 3PM
(OPEN TO STALL HOLDERS FROM 2PM)

£10 PER STALL.

PLEASE CONTACT THE SCHOOL
FOR FURTHER INFORMATION

01909 491950

OFFICE@WHIPMANWOODSFHA.CO.UK



Coffee & Chat Group

Project for Inclusion of Neurodiversity in Schools [PINS]

FOR

- Any parent/carer of a child with any additional needs – no diagnosis needed.



SESSION 2 – Communication

- Find what makes communication work well, what doesn't, and how it could be improved in practical ways
- Explore inclusive ways for parent/ carers to give feedback
- Discuss how parent/carers and schools can build two-way communication together.

WHEN:

- Mon 8th Dec, 1:45- 3:15pm



WHERE:

- Whipman Woods Flying High Academy

**For further information please
contact: enquiries@nottpcf.org**



These sessions are being run by Nottinghamshire Parent Carer Forum - an independent charity run by and for parent carers.

NO NEED TO HAVE ATTENDED EARLIER SESSIONS – ALL WELCOME!